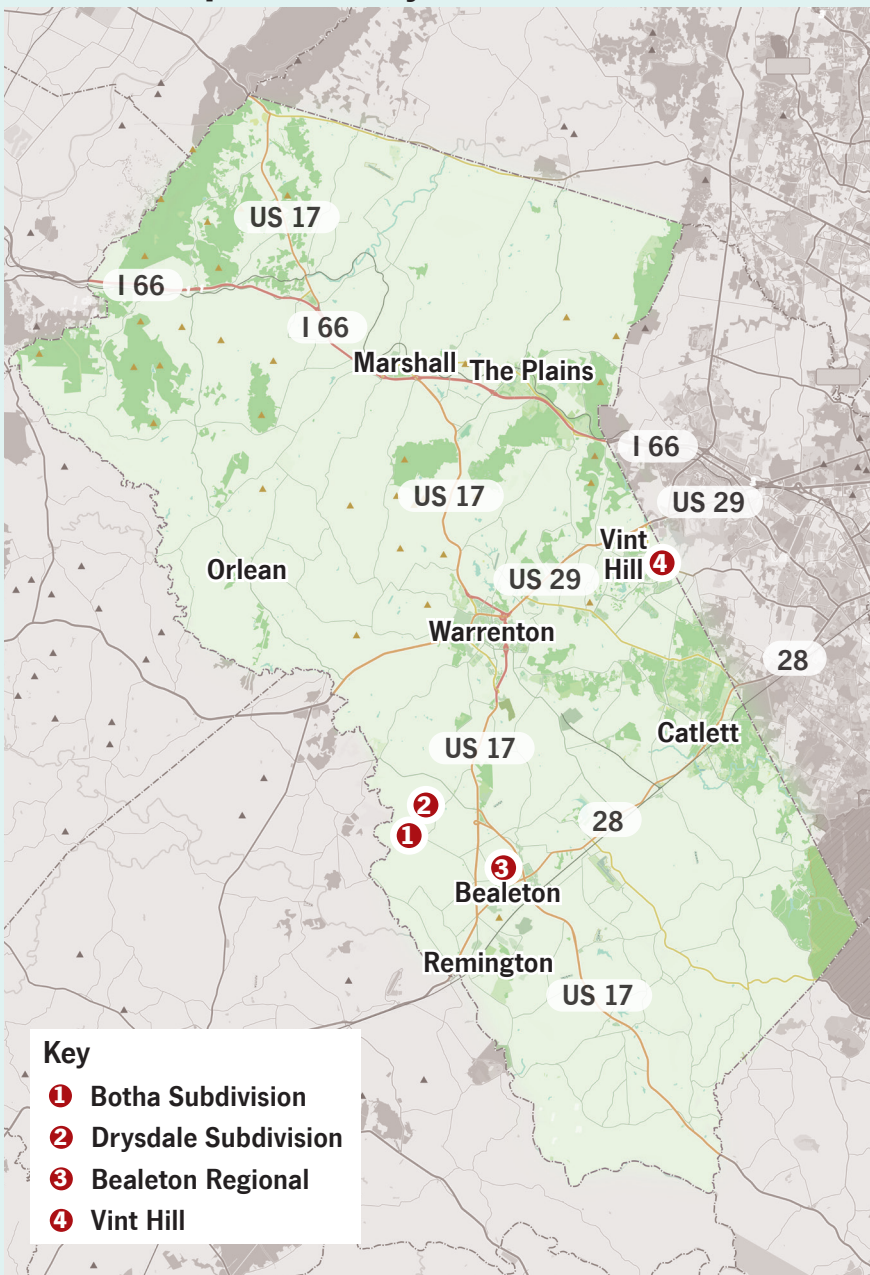


“Forever chemicals” found in more Fauquier water systems



Key

- ① Botha Subdivision
- ② Drysdale Subdivision
- ③ Bealeton Regional
- ④ Vint Hill

MAP DATA BY OPENSTREETMAPS; MAP BY VINCENT SALES

In the latest round of state testing, three of seven systems sampled found PFAS chemicals above the proposed new limits considered safe for consumption: Drysdale, Bealeton and Botha. Collectively, the three serve 1,544 homes and businesses. Separate tests have shown high levels of PFAS in drinking water wells at Vint Hill.